

# News on the Nineteenth

Wormley C of E Primary School (VC)  
Cozens Lane East, Wormley, Broxbourne, Herts, EN106QA

Tel: 01992 303331 Fax: 01992 303332

Have Faith, Show Respect, Take Responsibility and Achieve

www.wormley.herts.sch.uk

## June 2018

### SPORTS DAY

It was lovely to see so many families at our Sports Day - and the weather was perfect!

We wanted to introduce more competitive elements into the day through the track events but the timing did not work out as well as we expected.

Next year, we will rearrange events.

However, all the children took part with great effort and enthusiasm. The children particularly enjoyed the long distance run - KS1 children were amazing!

Well done to everyone but particularly those in *Farrah House* who came first overall with 700 points!



Here are the House Captains holding the cups.

### Y3 BALLET PROJECT

Just before half term, children in Year 3 were treated to an amazing performance of *Swan Lake*, performed at The Royal Opera House in Covent Garden.



We arrived early, so had lunch in Covent Garden watching the street entertainers.

Entering the Opera House, we were treated to a warm up of ballet dancers in the glass domed auditorium.

At last we took our amazing, front row balcony seats, inside....

The dancers were so fantastic, as was the sets and costumes. It was a truly wonderful experience, enjoyed by the children and staff.



Watch out for a school ballet performance .... Coming soon!

### PUPIL PARLIAMENT

Our members of the Pupil Parliament have done a great job this year - raising funds for charities and the school and helping staff to evaluate our policies.

On **Monday 2<sup>nd</sup> July**, they will visit County Hall to find out about the work of the local council and democracy at a local level.

They will see the chambers where members meet and make decisions for Hertfordshire. They will also be involved in raising a flag.

## OUR VALUE OF THE MONTH IS RESPECT

We are learning to have respect for ourselves and others.



Christians believe that God created all people, and created them differently for reasons and purpose we may not understand. Therefore, regardless of how we perceive other people to be, they are God's creations, and it is God's will for us to show respect to everyone.

## SATS/ASSESSMENTS

Well done to all of our children who have had their SATs and Phonic Screening. They all showed great resilience and effort. We are proud of you.



## THE NED SHOW

On **Tuesday 19<sup>th</sup> June**, the NED show will be visiting the school again. The character education programme centres around a 45 minute assembly called the NED show.

**NED** is a lovable cartoon character whose name is an acronym for

**N**ever give up, **E**ncourage others, **D**o your best

The excitement begins with the assembly and continues year round to promote a culture of kindness and excellence at your school.

In return for the visit, we agree to sell the brilliant yoyos - **these will be sold during school time only** (in the KS1 Library area and in the KS2 Dining area). Please try to send in the correct amount if paying in cash. Thank you.



## POET, NEIL ZETTER, RETURNS TO WORMLEY

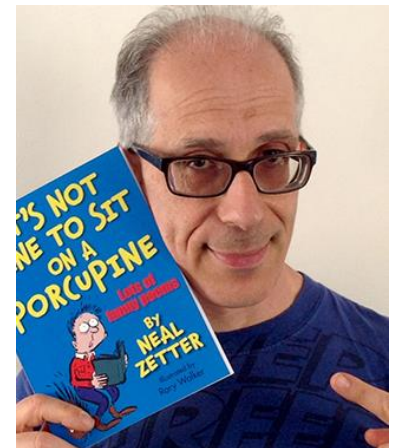
On **Tuesday 26<sup>th</sup> June**, Neil Zetter, the poet the children enjoyed last year, returns to Wormley!

Neil describes himself as a London-based comedy performance poet, author and entertainer. He uses his poetry to develop literacy, confidence, self-expression, creativity, performance and presentation skills in 3-103 year olds.

He makes language fun and accessible for the least engaged and stretches and challenges the most able.

The children really enjoyed his previous presentation and visit and Neil really enjoyed visiting us.

If you want to buy one of his books, your child can do so on the day.



## Y4 TRIP TO TOLMERS

Children in Y4 are off camping at Tolmers this week. They will camp for 2 evenings

**Wednesday 20<sup>th</sup> June -  
Friday 22<sup>nd</sup> June.**

Happy camping



## Y4 OPERA PROJECT

Reminder: Y4 will go to **Sheredes Primary**

on **Wednesday 27<sup>th</sup> June**

to see the opera they have been studying this term.

They will need a packed lunch as they may picnic in the park on the way - weather permitting.

They will walk back to school following the performance.

## MUSIC OPPORTUNITIES IN WORMLEY IN PARTNERSHIP WITH BROXBOURNE SECONDARY SCHOOL

Broxbourne Secondary School are sending their jazz band out on tour to local schools and we are lucky enough to have a visit on **Wednesday 11th July**.  
 Broxbourne Secondary School has a new clarinet and sax teacher who has some availability to offer tuition at Wormley from September. If you are interested, please let Miss Oyediwura know.



### WORMLEY HAS GOT TALENT

The school is running a talent show on **Friday 13th July**, starting at 1:30. All pupils are invited to audition for the final show the Friday before (singing, dancing, magic act, playing an instrument, gymnastics etc). Finalists will perform their talents in front of the judges and the school audience. The categories are as follows: KS1/Lower KS2/Upper KS2  
 A house winner in each category.

### TRANSITION DAY

On **Thursday 12th July**, our Y6 visit their secondary schools.  
 This is also the day that all classes 'budge up' to their next class for the morning.  
 More information to follow

### LEAVERS ASSEMBLY

On **Tuesday 24th July** a Y6 Leavers Assembly for pupils and their families will be held in St Laurence's Church at 9:15



### SUMMER CONCERT AND FAYRE Tuesday 24th July, 1:30- 4:30pm

This year's summer concert theme is '**Dance Styles**'.  
 The concert will be inspired by the different dance styles.



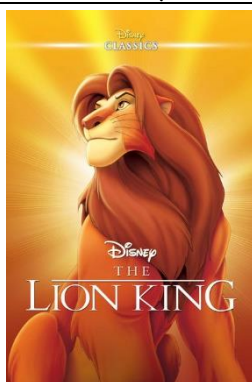
Families are invited along for the afternoon to watch the summer concert which starts at 1:30pm. Throughout the afternoon, you will be able to purchase refreshments and cream teas.

Following, the concert we hope to organise a Summer Fayre.....  
 Can you help with the bar-be-que? Can you sell refreshments?  
 Please let us know if you are ready to help.

### Y6 PERFORMANCE

On **Wednesday 18th July at 7pm** and **Thursday 19th July at 2pm**, our Y6 will stage a performance of **The Lion King**

This promises to be an outstanding performance with many stars - don't miss it!



### DISTRICT SPORTS

The date for District Sports this year is **Tuesday 3rd July**



### LOST PROPERTY

We have so much lost property. Children must take more responsibility for their belongings. Please ensure all items of clothing are **CLEARLY NAMED** then they can be returned. All lost property will be placed in the walkway from the front of the school to the KS2 playground. I know uniform is expensive, so please teach your child to look after it.

\*\*\*\*\*

Second-Hand Uniform Clothes Sale shall take place each day before and after school. This will be held outside the Yr 1 classrooms. 50p an item.

# Childcare Choices

The Government has introduced some changes to the Childcare Voucher scheme. If you are currently working for an employer that offers childcare vouchers then you can use them to pay for Breakfast & Afterschool Club. However the government has now introduced an alternative option called Tax-Free Childcare which is the new government scheme to help parents with the cost of childcare. It gives eligible families up to £2,000 free per child towards childcare costs and is designed to eventually replace the childcare vouchers. You can now use either scheme to pay for Breakfast & Afterschool Club.

To find out more about both schemes and to work out which may be better for you please visit the links below. Please note that you can only be a member of one scheme not both, if you and your partner currently have childcare vouchers then you need to make a joint decision as you cannot have one parent on the government scheme and another on the employer support childcare voucher scheme.

<https://www.childcarechoices.gov.uk/>  
<https://www.gov.uk/childcare-calculator>

Tax free childcare	Childcare vouchers
Eligibility	
<p>Anyone can apply</p>  <p>Employed &amp; Self employed</p>	<p>Only available if employer offers them</p> 
<p><b>£120/wk min earnings</b> If a couple, both parents must work</p> 	<p><b>No min earnings</b> One parent needs to work</p> 
<p><b>Child's max age</b> 11 (16 if disabled)</p> 	<p><b>Child's max age</b> 15 (16 if disabled)</p> 
<p><b>Max income limit</b> Less than £100,000 per parent</p> 	<p><b>No income limit</b></p> 
Which wins if you're eligible for both?	
<p><b>Max gain of</b> £2,000 gain per child (£4,000 if disabled)</p>	<p><b>Max gain of</b> £930/yr per parent (basic-rate taxpayer) £624/yr per parent (higher-rate taxpayer) £590/yr per parent (top-rate taxpayer)</p>
<p><b>20% off</b> childcare costs</p>	<p><b>No tax &amp; NI to pay</b> on childcare costs, equivalent to 32% for basic-rate tax payer (42% higher-rate, 47% top-rate)</p>
<p>Best option for more kids &amp; higher childcare cost</p> 	<p>Best option for fewer kids and lower childcare cost</p> 
Source: Moneysavingexpert.com, HMRC, HM Treasury	
MoneySavingExpert.com	

## PE KITS

Children must have the correct PE kit and trainers to take part in PE lessons.



Please check that your children have their kit in school on their PE day

## ENRICHMENT DAY

On **Monday 23<sup>rd</sup> July** we have an exciting Enrichment Day planned. We have a Caribbean Steel Pan performance followed by steel pan workshops for KS2 and Djembe Drum workshops for EY and KS1. We are asking for £3 contribution for the day.

Term will finish on **Wednesday 25<sup>th</sup> July at 1:30**