

News on the Nineteenth

Wormley C of E Primary School (VC)
Cozens Lane East, Wormley, Broxbourne, Herts, EN106QA
Tel: 01992 303331

Have Faith, Show Respect, Take Responsibility and Achieve
www.wormleyprimary.co.uk

June 2019

SPORTS DAY

It was lovely to see so many families at our Sports Day - and the weather was perfect! All the children took part with great effort and enthusiasm.

The KS1 house which came first was
Whitlock

The KS2 house which came first was
Trott

The house which was the overall winner was
TROTT HOUSE

Well done to everyone for taking part and trying their best.

Here are the House Captains holding the cups.



Y5 THEATRE PROJECT

Just before half term, children in Year 5 had an amazing trip to see the performance of The Lion King in the Lyceum Theatre, Covent Garden.

Arriving early, we were able to have lunch in Covent Garden whilst watching the street performers.

When we arrived at the theatre everyone was really excited!



The show was amazing - the scenery, the costumes, the props, the acting and the singing and dancing. There were even life-size giraffes and elephants! Rafiki and Zazu were the favourites of many of the children. It was a truly memorable experience, enjoyed by the children, parents and staff.

Watch out for an art project linked to the visit Coming soon!



A RECYCLED LION

Last term, Wormley took part in a recycling challenge for Paradise Park. The challenge was to build a model of a full sized lion from recycled materials. This is why we asked the whole school community to help with making eco bricks from plastic bottles. Under the guidance of our Art Leader, Miss Davies and Mrs Barton-Hagger, the children made an impressive model which went on display in Paradise Park over the bank holiday weekend.

Our model lion was a WINNER!

Instagram celebrities - Woody (of Woody & Kleiny) and his son Bailey - who are ambassadors for the zoo, alongside directors of the park and the park owner awarded Wormley **FIRST PRIZE** for primary schools. Paradise Park will deliver a range of gifts to the schools and a gift for our Art Ambassadors and Members of the Pupil Parliament who helped with the challenge.



OUR VALUE OF THE MONTH IS RESPONSIBILTY

We will be exploring how to take responsibility for doing the right thing not the easy thing; meet a personal challenge; run the race of life and make a difference.



"Train up a child in the way he should go; even when he is old he will not depart from it."
Proverbs 22

SATS/ASSESSMENTS

Well done to all of our children who have had their SATs and Phonic Screening Check. They all showed great resilience and effort.

We are proud of you.



MUSIC OPPORTUNITIES AT WORMLEY PRIMARY SCHOOL

Broxbourne Secondary School has a piano and guitar teacher who offers lessons here and a new clarinet and sax teacher who has some availability to offer tuition here at Wormley from September. If you are interested, please let Mrs Thompson know.

Last week, a teacher from *Rocksteady Music School* visited for a fantastic rock session where children and staff performed in a band on the keyboard, the electric guitar and the drums!

They are taking bookings for children who want to learn one of these instruments as part of a band.

You can find out more details by calling **0330 113 0330** or emailing enrol@rocksteadymusicschool.com



Y4 TRIP TO TOLMERS

Children in Y4 had a wonderful time camping at Tolmers last week. The weather was fabulous on the first day and they enjoyed a host of activities which involved climbing, archery and water balloons!

The first night sleeping out under canvas was challenging for some of the children and most woke with the dawn and the morning chorus about 4:30!

NATIONAL CHILD MEASUREMENT PROGRAMME

Public Health England have just sent the 2019 summary results for Wormley CofE Primary School to share with parents.

- The proportion of Reception children who were overweight or obese was **24%**, similar to other schools across England (22%) and above Hertfordshire (19%)
- The proportion of Y6 children who were overweight or obese was **34%**, the same as other schools across England (34%) and above Hertfordshire (29%)



Public Health
England

In any population of children, it would be expected that 10% would be overweight and a further 5% would be obese. However current levels across England are far higher.



A child's weight status affects their **health and wellbeing** and these are the reasons why Wormley CofE Primary School are expected to take action. It is a statutory duty, evaluated by Ofsted Inspectors, that schools actively assist pupils (and their parents) with increasing knowledge of how to keep themselves emotionally and physically healthy.

We do this through the curriculum and Enrichment Days.

We promote activity through PE, the Daily Mile, active break times, lunch and after-school clubs.

We promote yoga and mindfulness throughout the day.

We teach children about food groups and balanced meals. We have strict guidelines for food consumed on school premises.

Parents are expected to support the school in this.

Together, we can help our children stay healthy and well.

TRANSITION DAY

On **Thursday 11th July**, our Y6 visit their secondary schools. This is also the day that all classes 'budge up' to their next class for the morning.
More information to follow

LEAVERS ASSEMBLY

On **Tuesday 22nd July** a Y6 Leavers Assembly for pupils and their families will be held in St Laurence Church at 9:15



WORMLEY HAS GOT TALENT



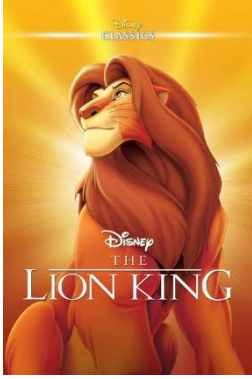
The school is running a talent show on **Friday 5th July**, starting at 1:30. All pupils are invited to audition for the final show the Friday before (singing, dancing, magic act, playing an instrument, gymnastics etc). Finalists will perform their talents in front of the judges and the school audience. The categories are as follows: KS1/Lower KS2/Upper KS2
There will be a house winner in each category.

PE KITS

Children must have the correct PE kit and trainers to take part in PE lessons.



Please check that your children have their kit in school on their PE day



SUMMER CONCERT AND FAYRE
Tuesday 23rd July, 1:30- 4:30pm

This year's summer concert theme is 'Disney'.

The concert will be inspired Disney films
Families are invited along for the afternoon to watch the summer concert which starts at 1:30pm. Throughout the afternoon, you will be able to purchase refreshments and cream teas.

**Following, the concert we hope to organise a Summer Fayre.....
Can you help with the bar-be-que? Can you sell refreshments?
Please let us know if you are ready to help.**

Y6 PERFORMANCE

On Wednesday 17th July at 1.30pm and Thursday 18th July at 6.30pm, our Y6 will stage a performance of The Jungle Book
This promises to be an outstanding performance with many stars
- don't miss it!

DISTRICT SPORTS

The



date for District Sports this year
is **Tuesday 25th June**

LOST PROPERTY





We have so much lost property. Children must take more responsibility for their belongings.
Please ensure all items of clothing are **CLEARLY NAMED** then they can be returned.
All lost property will be placed in the walkway from the front of the school to the KS2 playground.
I know uniform is expensive, so please teach your child to look after it.

Childcare Choices

The Government has introduced some changes to the Childcare Voucher scheme. If you are currently working for an employer that offers childcare vouchers then you can use them to pay for Breakfast & Afterschool Club. However the government has now introduced an alternative option called Tax-Free Childcare which is the new government scheme to help parents with the cost of childcare. It gives eligible families up to £2,000 free per child towards childcare costs and is designed to eventually replace the childcare vouchers. You can now use either scheme to pay for Breakfast & Afterschool Club.

To find out more about both schemes and to work out which may be better for you please visit the links below. Please note that you can only be a member of one scheme not both, if you and your partner currently have childcare vouchers then you need to make a joint decision as you cannot have one parent on the government scheme and another on the employer support childcare voucher scheme.

<https://www.childcarechoices.gov.uk/>
<https://www.gov.uk/childcare-calculator>

Tax free childcare	Childcare vouchers
Eligibility	
<p>Anyone can apply</p>  <p>Employed & Self employed</p>	<p>Only available if employer offers them</p> 
<p>£120/wk min earnings If a couple, both parents must work</p> 	<p>No min earnings One parent needs to work</p> 
<p>Child's max age 11 (16 if disabled)</p> 	<p>Child's max age 15 (16 if disabled)</p> 
<p>Max income limit Less than £100,000 per parent</p> 	<p>No income limit</p> 
Which wins if you're eligible for both?	
<p>Max gain of £2,000 gain per child (£4,000 if disabled)</p>	<p>Max gain of £930/yr per parent (basic-rate taxpayer) £624/yr per parent (higher-rate taxpayer) £590/yr per parent (top-rate taxpayer)</p>
<p>20% off childcare costs</p>	<p>No tax & NI to pay on childcare costs, equivalent to 32% for basic-rate tax payer (42% higher-rate, 47% top-rate)</p>
Best option for more kids & higher childcare cost	Best option for fewer kids and lower childcare cost
	
Source: Moneysavingexpert.com, HMRC, HM Treasury	
MoneySavingExpert.com	

Breakfast & Afterschool Clubs

From September there will be a new way of booking your child's place. This will be an online version through school gateway and places will have to be paid for at the time of booking.

More details to follow.

Term will finish on **Wednesday 24th July at 1:30**