

# News on the Nineteenth

Wormley C of E Primary School (VC)  
Cozens Lane East, Wormley, Broxbourne, Herts, EN106QA  
Tel: 01992 303331

Have Faith, Show Respect, Take Responsibility and Achieve  
[www.wormleyprimary.co.uk](http://www.wormleyprimary.co.uk)

## May 2019



### SATs AND WHOLE SCHOOL ASSESSMENT WEEKS

During the week **Monday 13<sup>th</sup> - 17<sup>th</sup> May**, our Y6 children took their national Standard Assessment Tests (SATs). Children and staff have worked hard throughout the year to prepare the children for the tests and to get them ready for secondary school. The children have all made so much progress. Well prepared, the children were confident, positive and resilient in their approach to the tests in spite of high expectations from the Department for Education (DfE).

Y2 children started their tests last week too - completing the reading tests. This week they will sit the maths tests as they continue to be assessed for their end of key stage achievement.

Y1 children will take a Phonic Screening Check during the week beginning **10<sup>th</sup> June** to see if they are on track with learning strategies for early reading.

Other year groups will also be assessed over the next few weeks after half term to track their attainment and progress.

Please ensure your children attend school during these important weeks and keep up the good practice of making sure your children have a good night's sleep and a healthy breakfast.

Thank you.

#### HALF TERM/INSET DAY

We break up for half term on **Friday 24<sup>th</sup> May** and return on **Monday 3<sup>rd</sup> June**.  
We hope you have a lovely Spring break.

#### CLASS PHOTOS/TEAM PHOTOS

Please dress smartly and bring in sports team kits on **Tuesday 4<sup>th</sup> June**.  
The school photographer will be in.

#### MESSY CHURCH

This coming **Tuesday 21st May**, straight after school (**3:15-5:15**), in the **KS2 hall**

**FREE FOR EVERYONE**



Messy Church is a way of 'being church' for families, involving lots of fun! Messy Church starts with a time of crafts, games, sports and other activities to try out for both children and their parents & carers. We then enjoy singing some songs and explore together Jesus' love for us through an interactive Bible story. To top it all off we finish with a wonderful meal together.

Messy Church is completely **free of charge** and will happen straight after school once a month at Wormley School, so do pop along.

**Messy Church is a joint venture between Wormley School and the Parish of Broxbourne and Wormley.**

## SPORTS DAY

This years' Sports Day will be held on **Friday 24th May**.



The **KS2** events will take place during the morning from **10:00am-11:30am** and the **KS1** events will take place in the afternoon from **1:30pm-2.30pm**. Reception and Nursery classes will also run their races on this day - 2 classes in the morning and 2 in the afternoon.

Please see the outline of the day below.

<u>Time</u>	<u>Event</u>
9:00-9.30am	YR Starfish (Mrs Burling's class) and morning Nursery events
10.00-11.45am	KS2 carousel, events and competitive finals
12.00-1.00pm	Whole school picnic
1.00-1.30pm	YR Angelfish (Mrs Campkin's class) and afternoon Nursery events
1.45-2.40pm	KS1 carousel, events and competitive finals
2.45-3.00pm	Results

We will be holding a whole school picnic on the field that day too. If your child has a school dinner, they will be provided with a school packed lunch on this day and eat with the rest of the school on the field (your child will have chosen which packed lunch they would like beforehand).

Parents, family and friends are welcome to come along and encourage the children during the events. As all events will take place on the school field, please make your way straight there upon arrival. For health and safety reasons, we ask that parents please stay on the outside of the track as the children will be on the inside of the track. Refreshments will be available to purchase plus a raffle.

Children should come to school in their PE shorts/tracksuit bottoms, t-shirt in their houses' colour and trainers (not plimsolls) for the day. Please send in water bottles. If it is hot, sun hats should be worn and sun cream applied in the morning.



We look forward to an enjoyable day! Thank you for your support.

### VALUE OF THE MONTH IS SERVICE

This month we will be considering how we might serve one another in many different ways

- playing together,
- helping one another with learning, sharing



We will also learn about some of the symbols and actions in the Christian Church such as baptism, communion, Pentecost.

*"For even the Son of Man did not come to be served, but to serve, and to give his life as a ransom for many." Mark 10:45*

### LATENESS

Please try not to be late in the mornings as this can really unsettle a child. Learning starts as soon as they enter the classroom.

However, if you are late, please bring the children to the Reception as the register may have closed and will not register the correct number of children if there was an emergency. They may also need to order a lunch.

You will be asked the reason why your child is late for school.





Department for Education

### ATTENDANCE

This term, our attendance has slipped below the national expectation for all schools of 96%.

Our attendance was **94.75%**.

It was a shock to see that **80.2%** of pupils had at least one absence in the Spring Term.

**54 children** are identified as **persistant absentees**, with an overall absence rate of 10% or more.

**This is equal to one day absent from school every week!**

In response, we must continue with our rigorous and robust systems in order to ensure attendance at the school is above the Government's national expectation of 96%.

Early morning telephone calls will be made to families whose attendance causes concern, and calls will also be made to all families where the reason for absences has not been reported to us.

Weekly checks on individual percentages are being carried out, and families whose attendance is causing concern are requested to attend meetings with members of the School Leadership Team.

Holidays in term time will not be authorised.

Thank you to all parents and carers who work closely with the school to make sure that their children are in school learning, every day. This is something we are really passionate about and we look forward to seeing improved attendance over the coming term.



### WONDERFUL FUND RAISERS

Some of our lovely children have shown great entrepreneurial skills to raise funds for charities and our school.

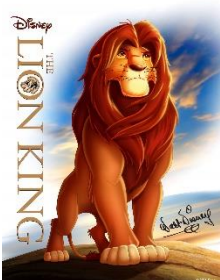


Isabella organised a raffle and raised money for Herts Young Homeless.



Girls in Y3 and Y4 held cake sales to raise funds for school

We are very proud of our young citizens for showing care and consideration for others - our heroes!



### Y5 THEATRE TRIP TO LION KING

This Wednesday, Y5 children will travel to London to see the production of the LION KING. This will hopefully inspire an art project which will lead to an accreditation - an Art Award for each child.

### Y4 CAMPING TRIP TO TOLMERS

A reminder to parents for the final payment for Y4 camping trip to Tolmers  
**6th - 7th June.**





## GEOGRAPHY FIELDWORK TERM

The half term has been our school's geography fieldwork focus.

The national curriculum requires children to be competent in geographical skills, including collecting, analysing and communicating with a range of data that is gathered through experiences of fieldwork, that deepens their understanding of geographical processes.



*KS1 children should be able to:*

- Use simple compass directions (North, South, East and West) and locational and directional language, eg. near and far/left and right to describe the location of features and routes on a map
- Use simple fieldwork and observational skills to study the geography of their school and its grounds and the key human and physical features of its surrounding environment.

*KS2 children should be able to:*

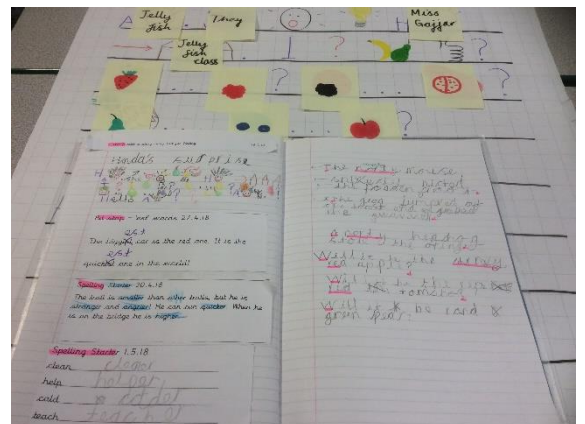
- Use the eight points of a compass, four and six-figure grid references, symbols and key (including the use of Ordnance Survey maps)
- Use fieldwork to observe, measure, record and present the human and physical features in the local area using a range of methods, including sketch maps, plans and graphs, and digital technologies.

The children really enjoyed the fieldwork and gained new knowledge and skills.

## PRIMARY WRITING PROJECT (PWP)



The whole school continues to be involved in an exciting project this year developed by Pie Corbett - an English educational trainer, writer, author and poet who has written well over two hundred books. He is best known for creating the Talk for Writing approach to learning, which we use in school.



As part of this project, the children have been telling stories orally, then through story maps and finally in writing.

Ask the children to tell you their stories, plays and poems that they have created - you will be impressed!

## OFFICE POST BOX



Please note, that there is now a post box located in the reception office for your convenience. You may drop off forms, letters and money as the box is securely locked.

We hope this will cut down waiting times for you.

## GARDENING CLUB

**HELP!** Gardening Club are looking for donations of seeds and plants. We have prepared our patch for growing and have planted runner beans, strawberries and potatoes, but have plenty of room for more.

We would be very grateful for any donations!

## PIRATES OF PENZANCE OPERA PROJECT

A reminder that children in Y4 are taking part in the local church schools' Opera Project linked to the Royal Opera House.

This year, they have been learning all about the Gilbert and Sullivan's opera *Pirates of Penzance* which is a comic opera, full of sentimental pirates, blundering policemen, absurd adventures and improbable paradoxes. An opera in two acts, with music by *Arthur Sullivan*

and libretto by *W. S. Gilbert*.



Frederic, a pirate's apprentice, falls head-over-heels in love with Mabel, the daughter of Major-General Stanley. Frederic is due to be released from his apprenticeship on his 21<sup>st</sup> birthday, but there is a snag. Born on 29<sup>th</sup> February, Frederic discovers that he is technically still a youngster. Although very much in love, his dedication to duty is unshakeable. Can he find a way to live happily-ever-after with Mabel?

They will watch a specially adapted production of this opera at Sheredes Primary School on **Thursday 13<sup>th</sup> June**.

This will be a fantastic experience!

## SUMMER CONCERT AND SUMMER FAYRE

**Tuesday 23rd July, 1:30 - 5:30pm**

Throughout the afternoon, you will be able to purchase refreshments and raffle tickets.



The concert will be followed by an afternoon of fun activities for all the family, including a variety of stalls, a barbeque, bouncy castles, an adult tombola, a children's tombola and a lucky dip.

We hope you will be able to book time off for the afternoon to come along, help and enjoy.

**Any funds raised will help to improve the learning environment for the children.**

*If you could run some stalls and a barbeque after the concert, please contact the school as soon as possible. Thank you.*



## HOME LEARNING

As DT Lead, I am delighted with the Bird Boxes the children in Y5 have been making at home with their families.

The children made prototypes in school to learn about 3D wooden structures and then were challenged to make an actual bird box at home.

There were some amazing outcomes!

### Can you help?

We are looking for donations of soft wood for an Early Years Woodwork Project. If you can donate any offcuts, they would be greatly appreciated.



## HALF TERM ACTIVITIES AT WORMLEY CofE PRIMARY SCHOOL



### ARTS AND CRAFTS

Tuesday 28th May

Including Sand Art, Hama Beads, Painting, Clay models. It's loads of fun!



### COOKING

Wednesday 29th and Thursday 30th

Including mini quiches, bacon and cheese bread, chocolate flapjacks, jam and coconut cakes, carrot cake and lemon biscuits

### WILD IN THE WOODS

Friday 31st May,

including den building, natural art activities, clay animals, bug hunting, marshmallow toasting



## HALF TERM ACTIVITIES AT WESTFIELD SCHOOL



### MULTI-SPORTS

Thursday 30th May and Friday 31st May

Lacrosse, gymnastics, cheer leading, dodgeball, basketball, Kwik rounders cricket, football and many more

All activities **£16.95** per day. Ages 4 - 11 years old.

Registration 9-9:30 Pick up 3-3:30 (Early Drop off 8:15 and late pick up 4pm)

### HOW TO BOOK

To get a booking form call HABS on 01992 303331 or GARY CASLAKE on 07722 407 366

[www.gcsportsltd.co.uk](http://www.gcsportsltd.co.uk)

### AFTER SCHOOL CLUBS

We still have spaces in our after school sports clubs and drama club.

Ask in the Reception for more details

### TRANSITION MORNINGS FOR CHILDREN NEW TO RECEPTION

We have a set of transition mornings planned for parents of children who have children due to start in Reception in September

#### COMMUNICATION MATTERS 12th June 9-9:30

Come along and find out the ways we assess and support speech and language. Meet our Early Years Lead and our SENCOs.

#### WELL-BEING MATTERS 19th June 8-9:30

Come along and find out about our well-being activities such as mindfulness and yoga, the Daily Mile, the importance of play etc. Meet our Safeguarding Lead, Play Therapist and HABS Family Support Lead

#### HEALTH MATTERS 26th June 9-9:30

Come along and hear about healthy eating and healthy lifestyles from our School Nurse. Hear from our Forest School Leader about weekly Forest School sessions.



**Supporting Parents of Autistic Children in East Herts**  
**Venue: Rye Park Nursery School, Walton Road, Hoddesdon, EN11 0LL**

**1<sup>st</sup> Wednesday of every month 9.30 - 11.30.**

Come along for a coffee and a chat with other parents and tell us what you would like from the 'S.P.A.C.E' group monthly meetings.

There will be an opportunity to get advice and support for ASD/ADHD from the parents and the teams working in this field.

If you would like more information please contact Lisa on 01920 465650 or [lisawant@gmail.com](mailto:lisawant@gmail.com)

Working in partnership with

HABS Family Support Team 01992 303331 Opt 5

*(Hoddesdon and Broxbourne Settings support targeted families in the Broxbourne, Wormley and Hoddesdon area and in addition offer advice and support to local families)*